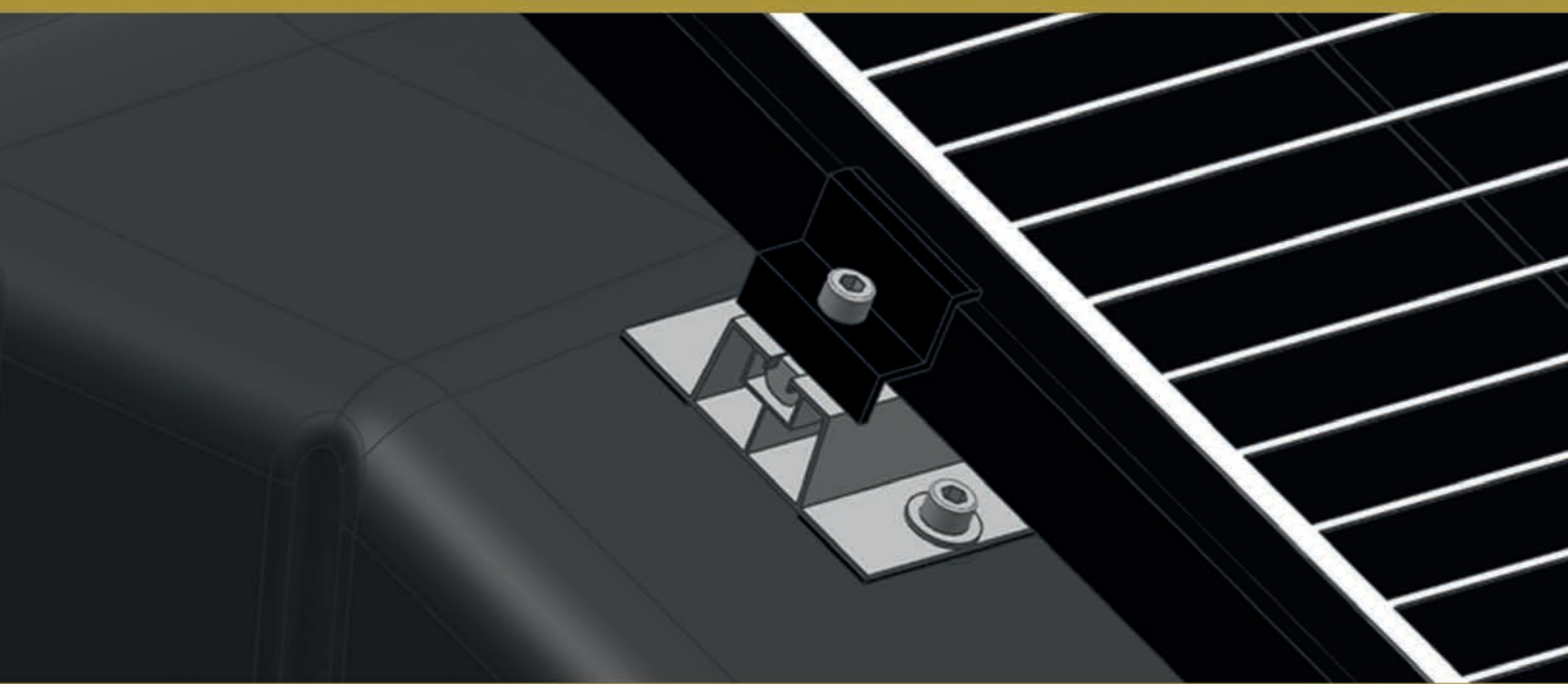


# Ballast systems GRAM-BOX

## Mounting



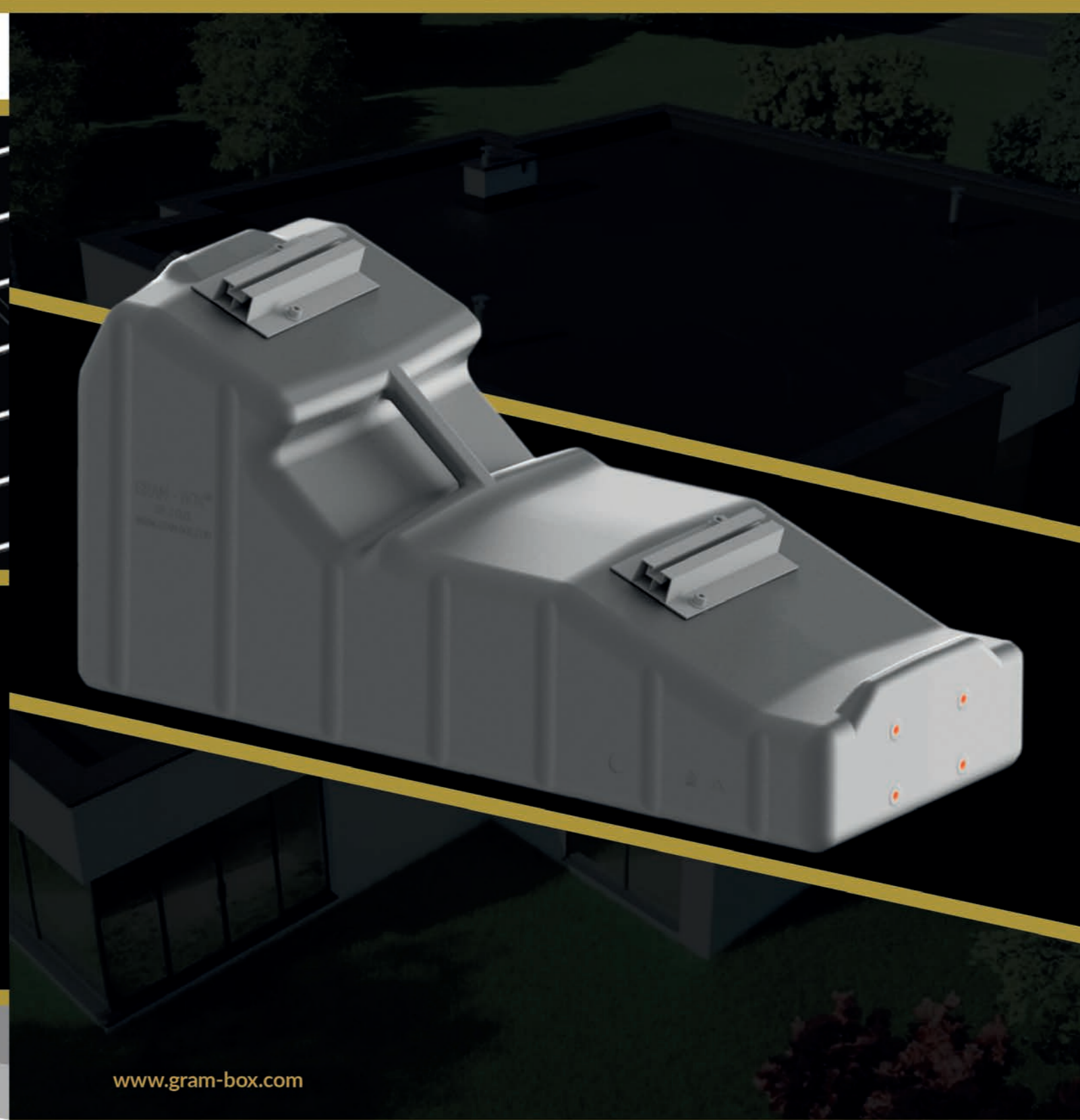
The GRAM-BOX system is adapted to mount all photovoltaic panels available on the market, regardless of the type, dimensions and power. Thanks to its features, the mounting can be performed much faster, and its time reduced by up to 80% compared to the existing solutions. The mounting of panels can be performed even by a single installer and the cost of transport to the place of installation is much cheaper.

IF YOU WANT TO BE ECO, PLAY GREEN!

IF YOU PLAY, IT'S A GRAM-BOX!

[www.gram-box.com](http://www.gram-box.com)

# GRAM-BOX System



[www.gram-box.com](http://www.gram-box.com)

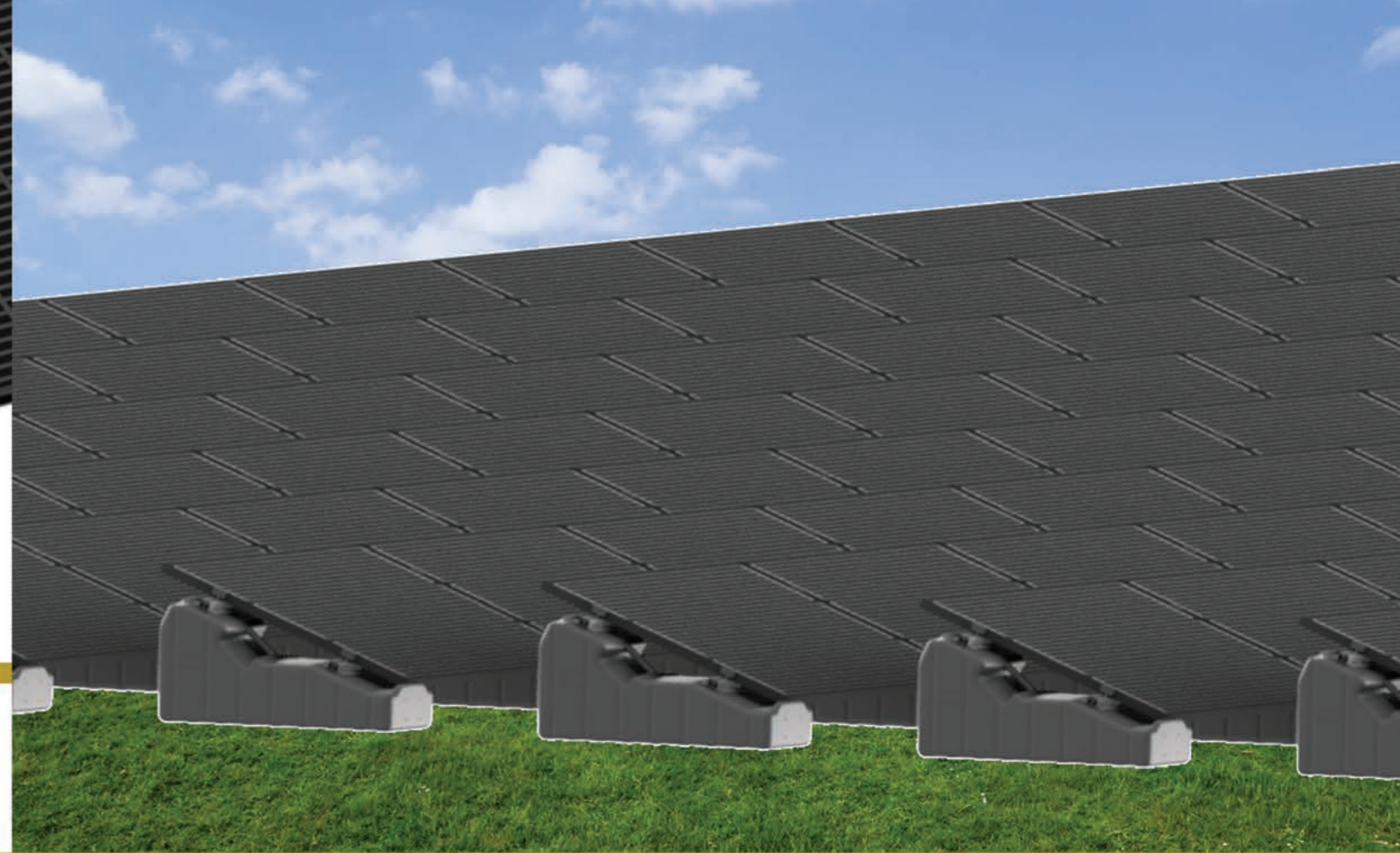
**maxcom**

TEL: +48 32 327 70 89  
sales@maxcom.pl  
[www.maxcom.pl](http://www.maxcom.pl)

## BALLAST SYSTEMS GRAM-BOX



Revolutionary solution  
for installation of photovoltaic panels

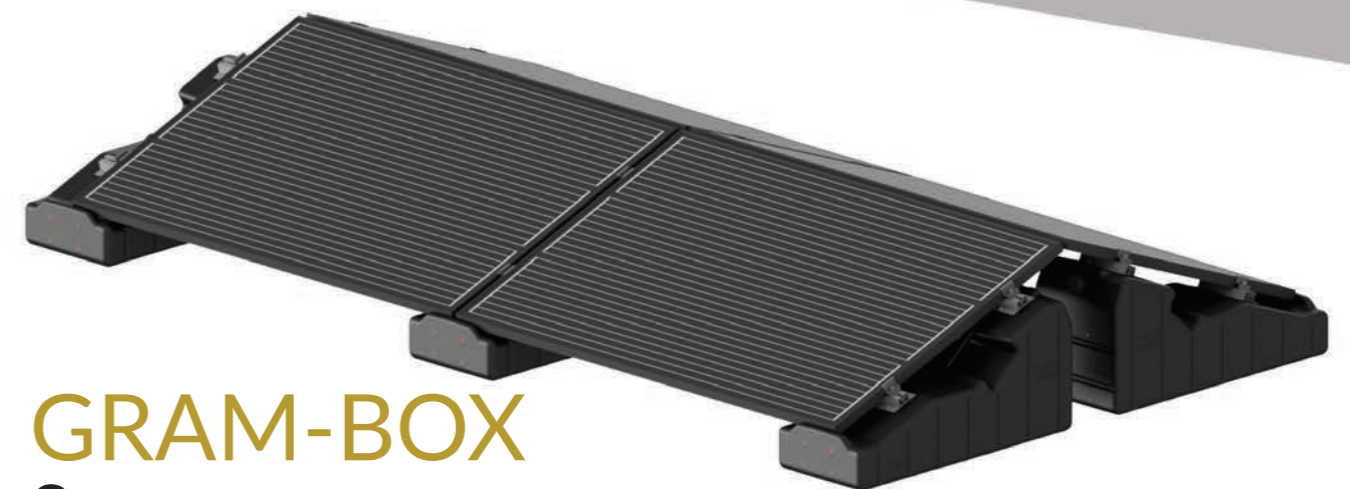


In existing solutions, the need to place weights on roof surfaces is inconvenient, because the high weight of transported elements with sharp edges can damage the roof surface.

The GRAM-BOX mounting system is a revolutionary solution to these problems. GRAM-BOX is a patented solution for a ballast tank made of plastic with very high mechanical strength and resistance to external factors. Unlike previous known solutions, the GRAM-BOX is characterized by a low weight (less than 4 kg), which makes it easy to transport while maintaining durability, mechanical strength, structural stability and lack of sharp edges that could mechanically damage the surface of the roof.

In the manufacturing process, the tank is pre-filled with a suitable amount of non-freezing concentrate. On site, the tank is filled with mains water (max. 60L) to determine the appropriate ballast weight for the construction. Low weight, high load capacity and stability, and an ergonomic shape with no sharp edges enable the use of the GRAM-BOX system on flat roofs, but also on pitched roofs with a slope of up to 10 degrees. The GRAM-BOX system can also be installed on the ground.

The GRAM-BOX is not only designed for individual installations, but also for photovoltaic farms. Thanks to its ergonomic shape and the possibility of creating various connection configurations, our 1 MW photovoltaic farm will cover an area of less than 1 ha.



GRAM-BOX  
System